



HLT
Human Language
Technology Lab @ NUS

**Human Language Technology
Laboratory**



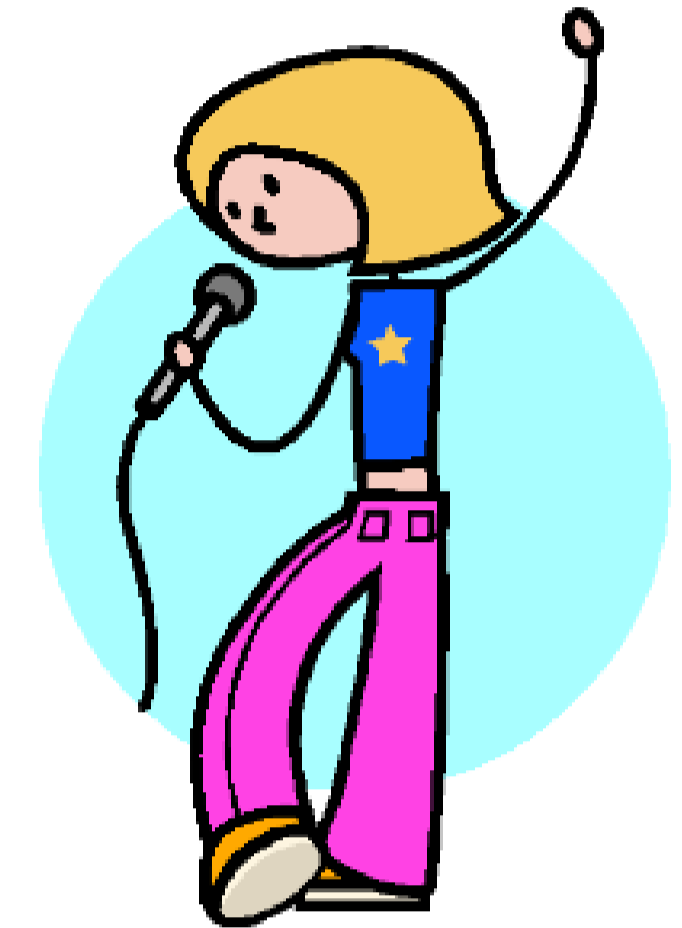
Speech Recognition



TEXT

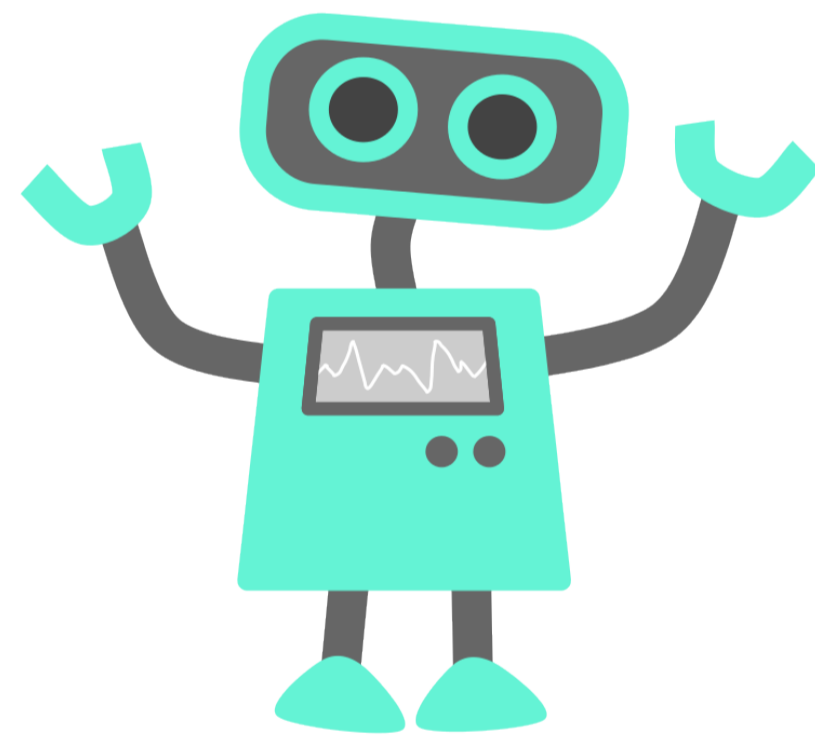
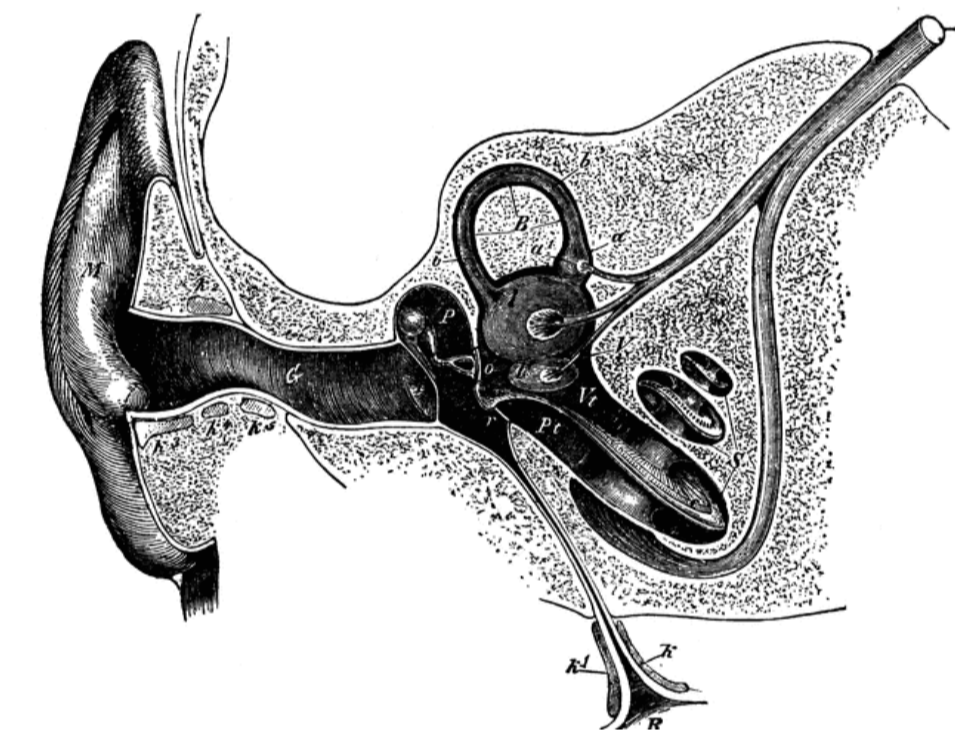
**Voice Analysis
& Synthesis**

TEXT



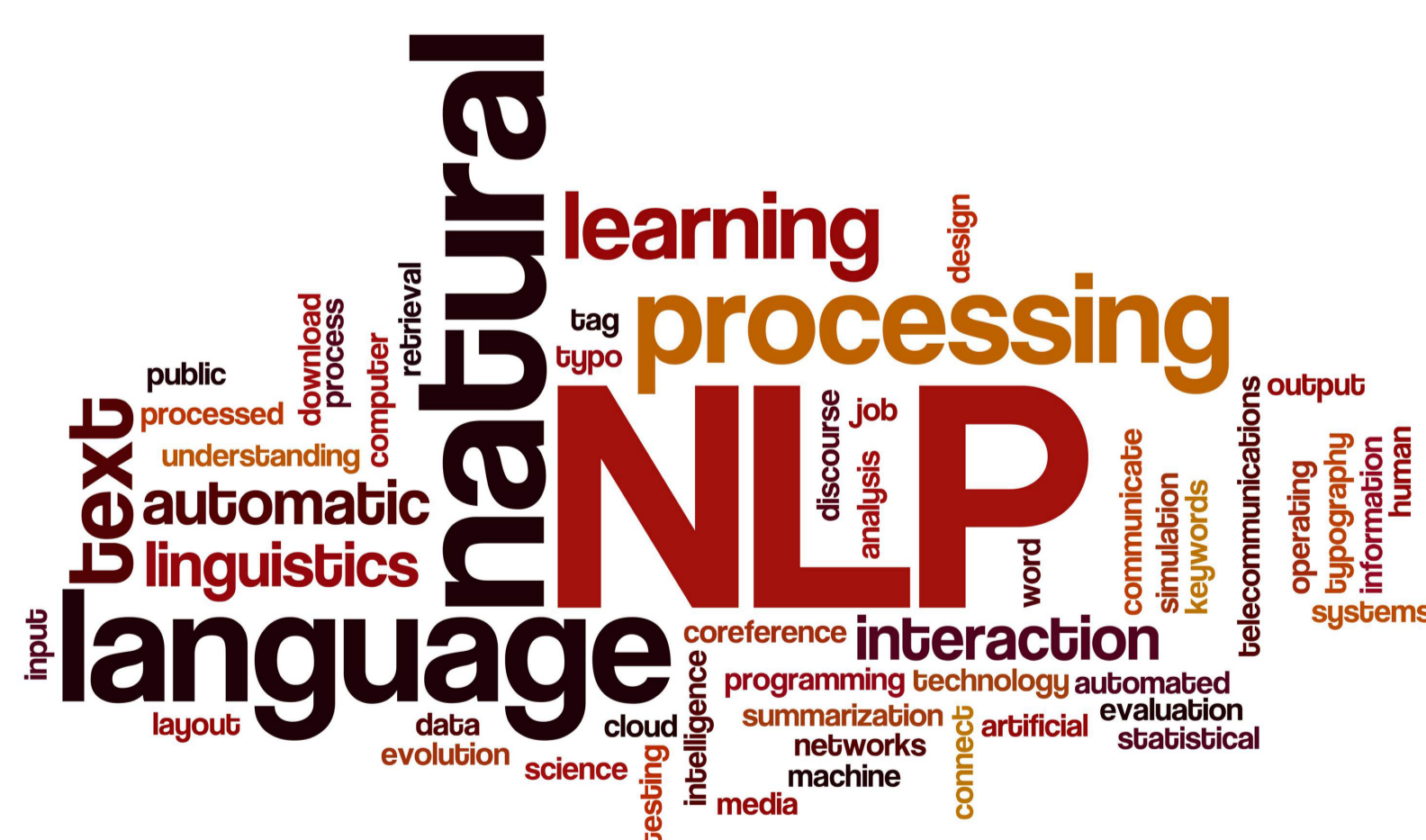
Dialogue Technology

**Neuromorphic Computing
& Auditory Model**



Human Robot Interaction

Selective Auditory Attention



Natural Language Processing

Multimedia Processing

