

SUPRA is an AI-based portable visual field testing device

Our Vision: Make visual field testing for glaucoma more accessible to the community

## Problem

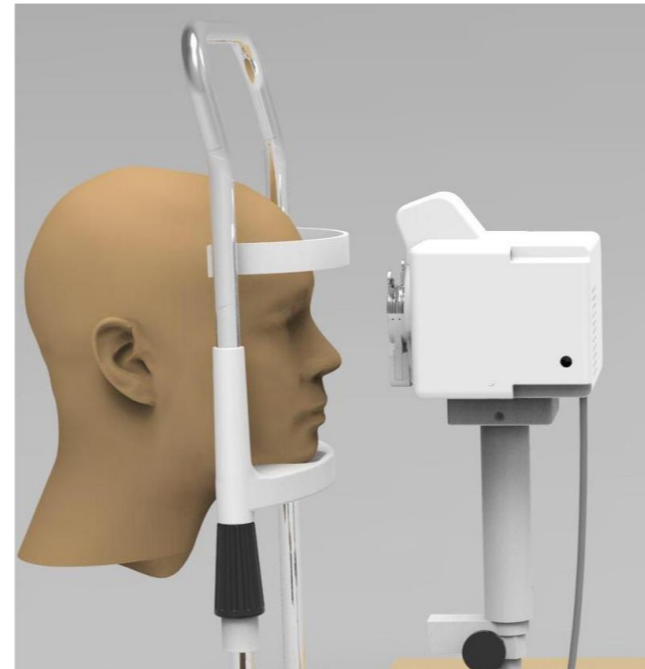


Current Visual Field Tests are **subjective, time consuming, tedious** and **uncomfortable**.

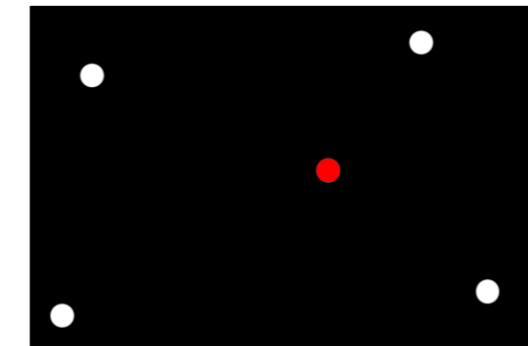
The Gold Standard Machine Humphrey's Field Analyzer is **expensive** and **not user friendly**

## Solution

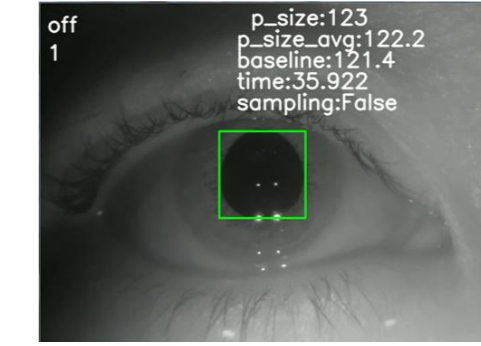
### Portable Perimetry Device



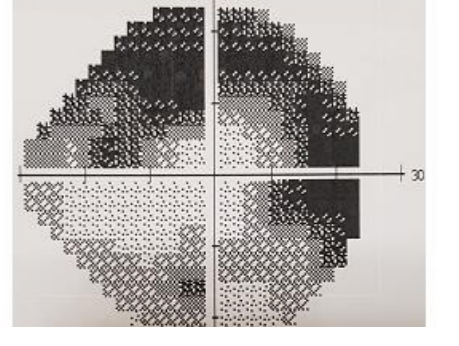
### Key Technology:



Fast visual field test



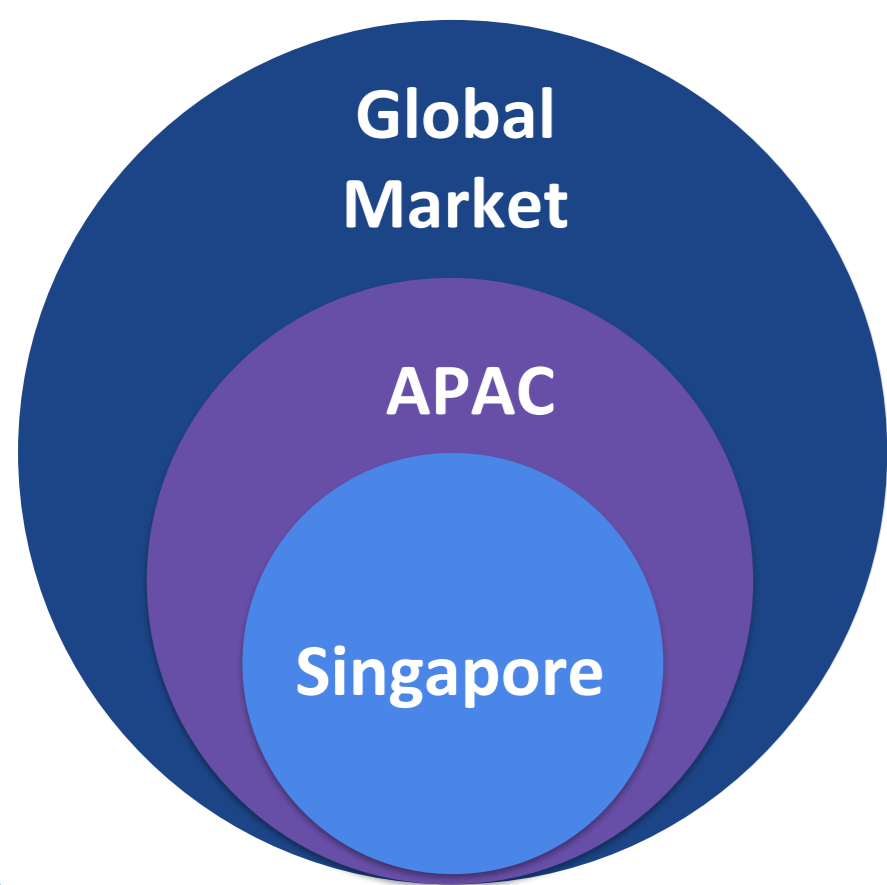
Automated Pupil Measurement



Cloud-Based A.I. Processing

- ✓ Portable (4x Lighter)
- ✓ Adjustable to User's Comfort
- ✓ Low Cost (75% less)

## Market Size



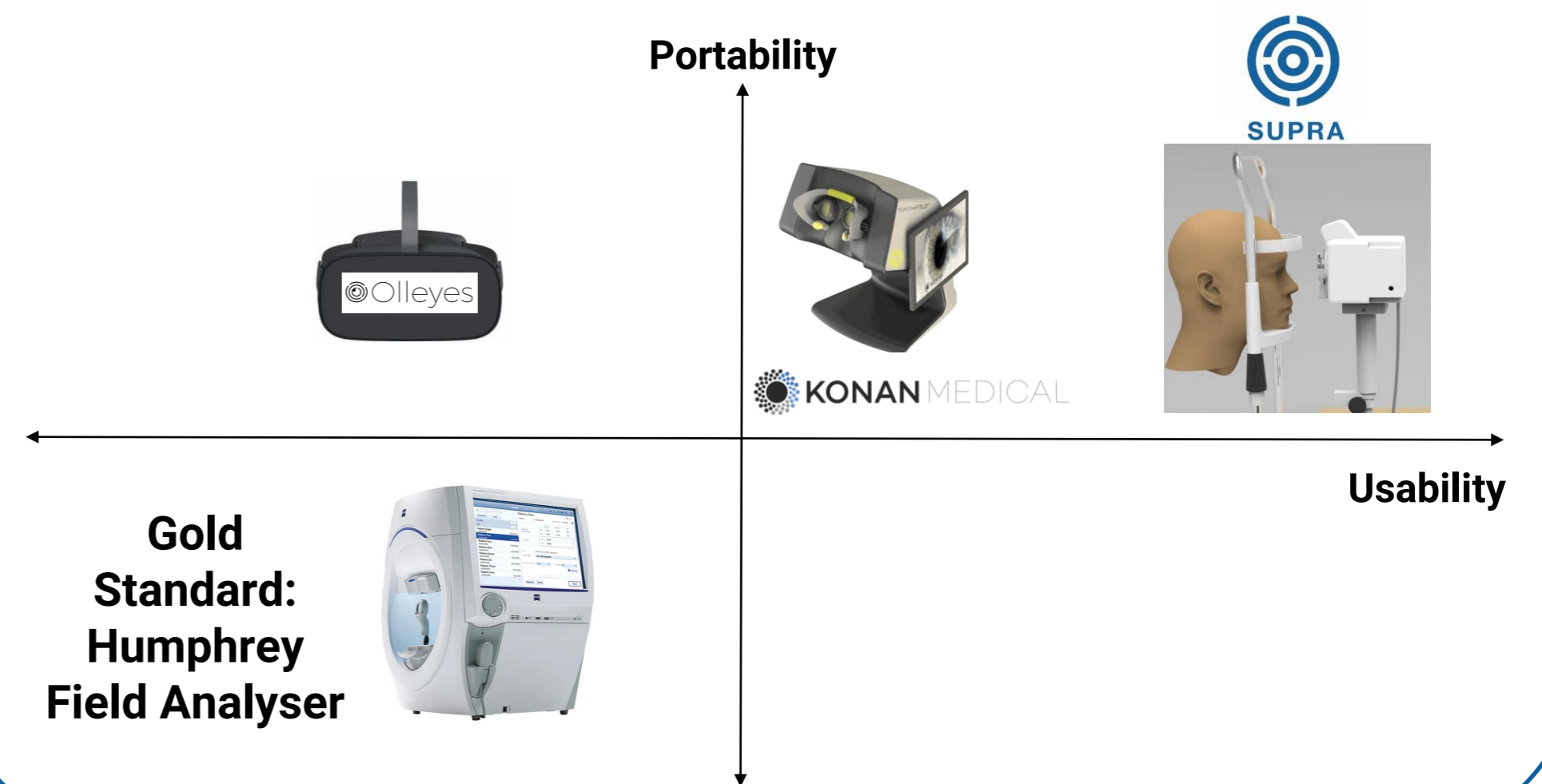
Global market - USD 919 mil  
APAC market - USD 647 mil  
SG market - USD 8 mil

Market for Visual Field Analyzer  
4.1% CAGR (2019-2025)



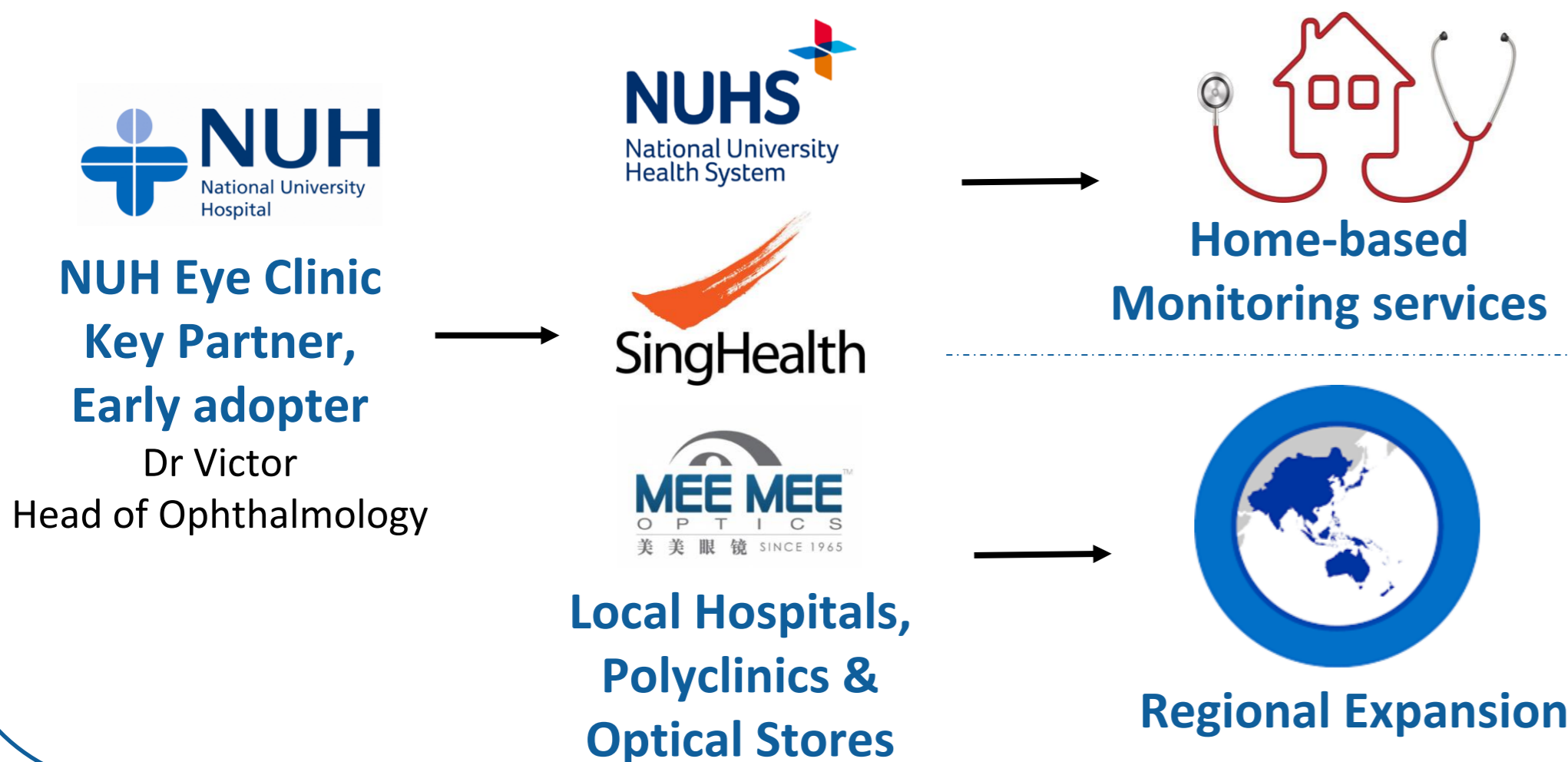
**112,000**  
Glaucoma Patients  
In 2025

## Competitor Analysis



## Go-to-Market Strategy

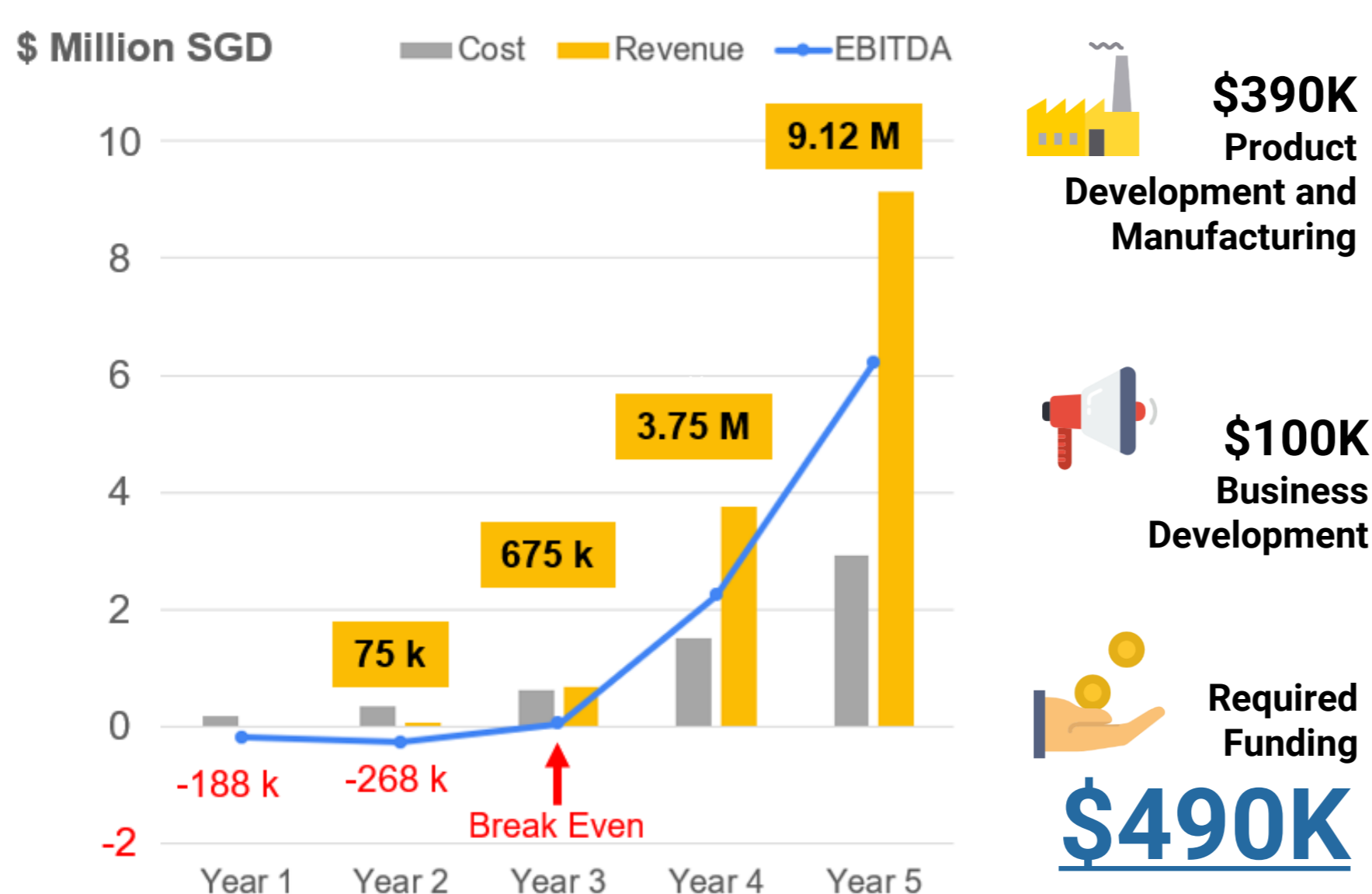
Year 1 ..... Year 2 - 3 ..... Year 4 - 5



## Business Model



## Financial Plan



## Team & Advisors

**Advisors**

- Prof Hong Minghui**  
Serial Tech Entrepreneur, Optics Expert
- Dr Victor Koh**  
Head of Ophthalmology, NUH
- Muhammad Azri**  
Research Engineer, Co-founder of Ocular Labs™

**The Team**

- Xingyu**  
Background in Information systems
- Zixuan**  
Experience in Market Analysis
- Rubin**  
Pharmacist, Experience in Healthcare Industry
- Tu Xin**  
Material Engineer
- Tze Chong**  
Product Development Engineer

