



# National Dental Centre Chair Performance Reporting and Optimisation



Industrial Systems Engineering and Management

Team Members: Lim Theck Yee, Lee Xin Ni, Qiu Junbin, Shou Ruyan, Wong Kay Yarn Zann  
 Department Supervisors: Prof. Ang Beng Wah, A/Prof. Ye Zhisheng  
 SingHealth Supervisors: Ms. Wong Sook Thow, Mr. Andrew Tan, Mr. Daniel Tay

## Project Description

Long waiting time to appointments coupled with the existence of sub-optimal dental chair utilisation indicates a mismatch between treatment supply and patient demand in the National Dental Centre of Singapore (NDCS). This mismatch cannot be effectively addressed due to the lack of consistent data reporting and visibility of dental chair performance. This project aims to help SingHealth develop a Business Intelligence (BI) tool that gives a better awareness of dental chair performance to senior management. It can also facilitate them to make informed decisions to optimise performance, ultimately leading to shorter waiting time and better patient satisfaction.

**Objectives**

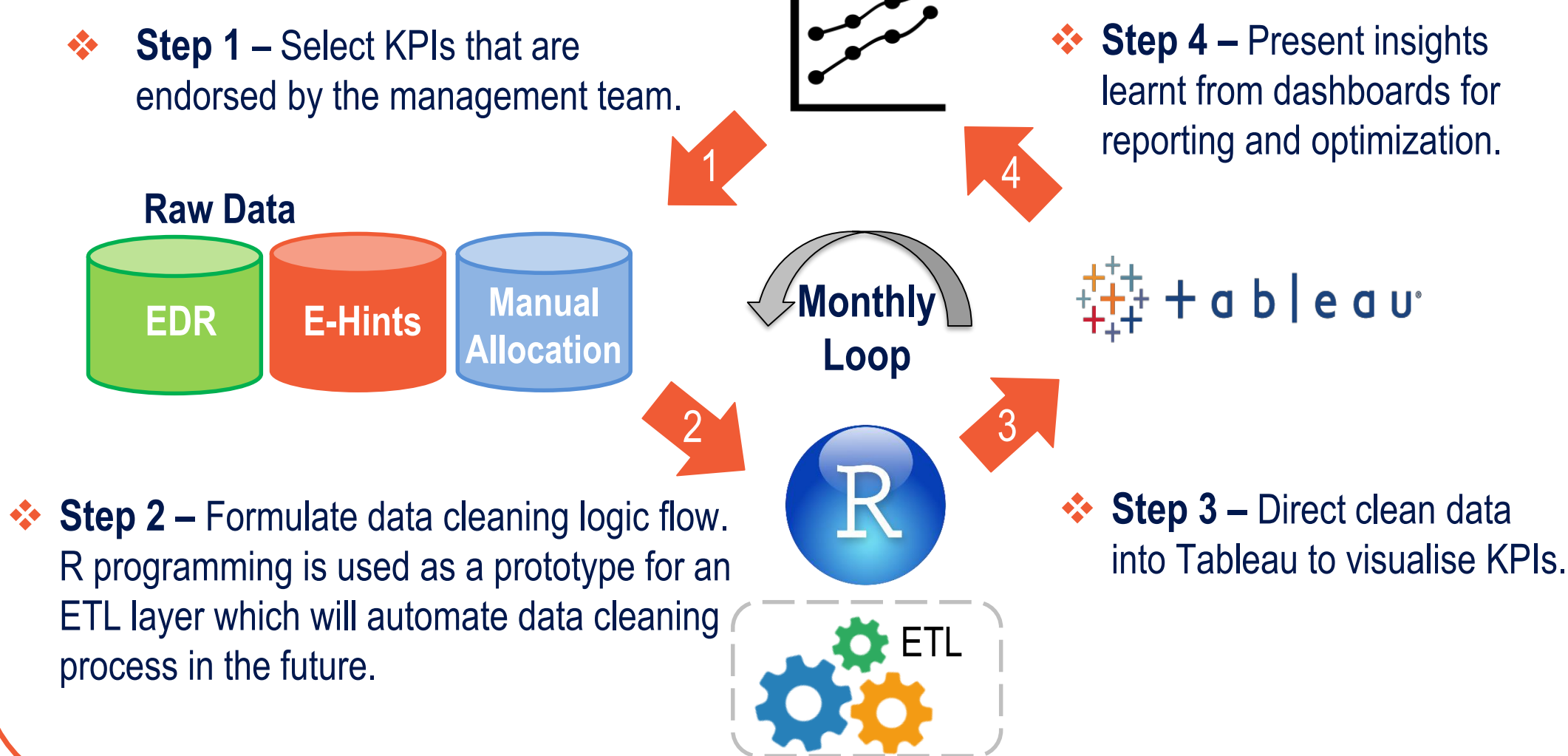
- DEVISE** KPIs to empower stakeholders in everyday operations
- ANALYSE** Current system performance to maintain and improve quality
- OPTIMISE** Propose strategies to augment current performance

## Methodology

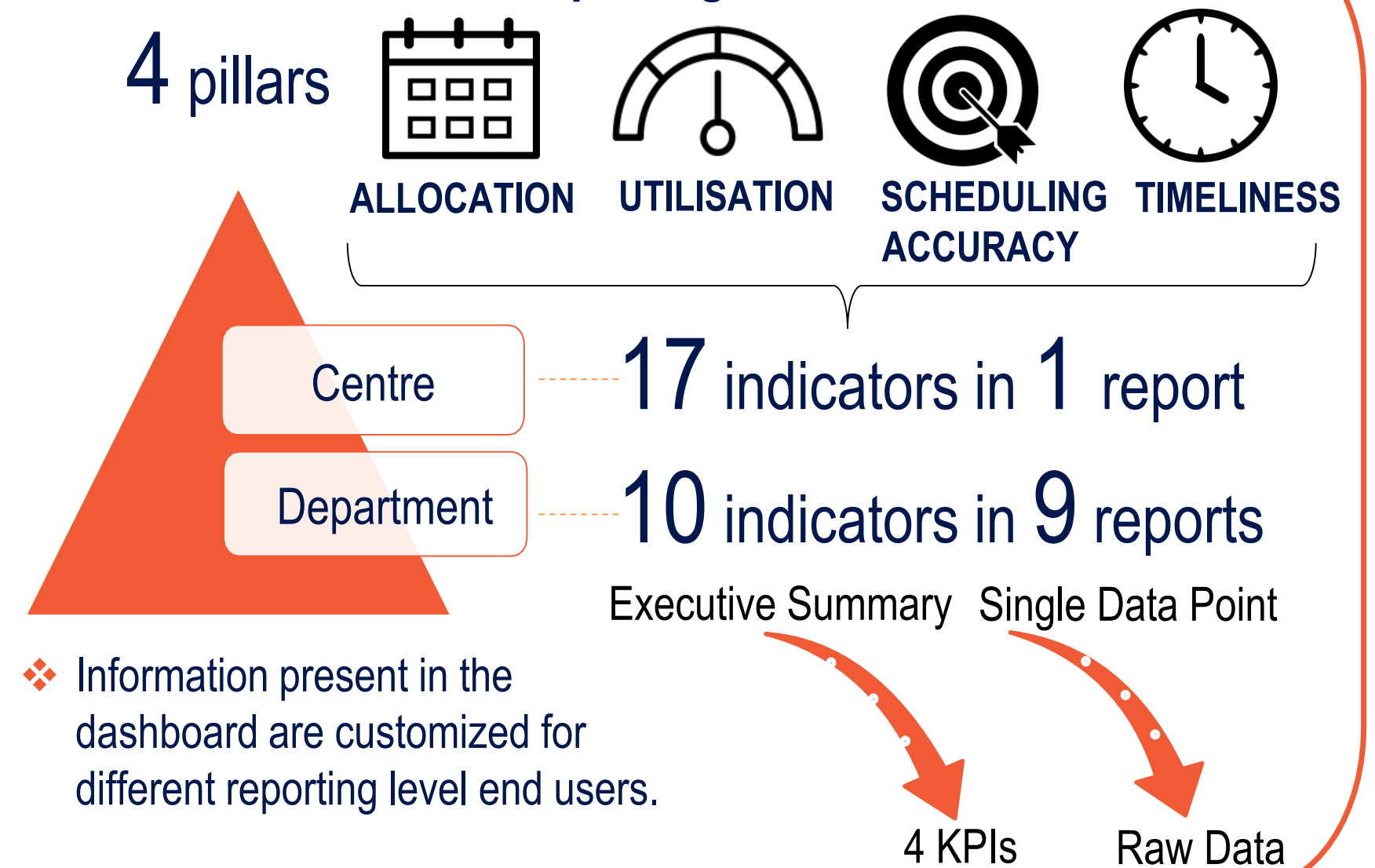


## Technical Implementation - Dashboards

### Dashboard Design Flow

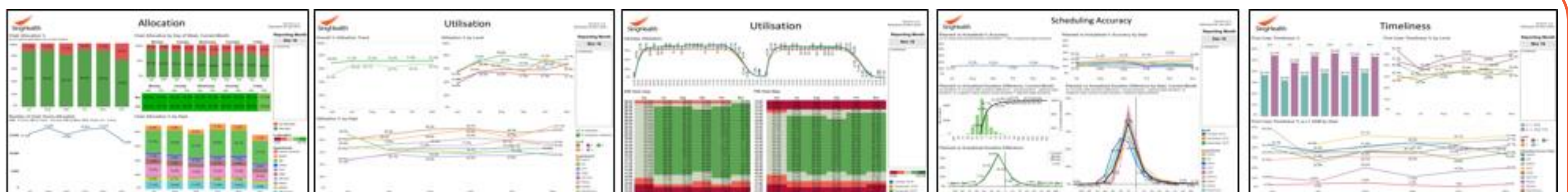


### Dashboard KPIs and Reporting Levels



## Product and Impacts

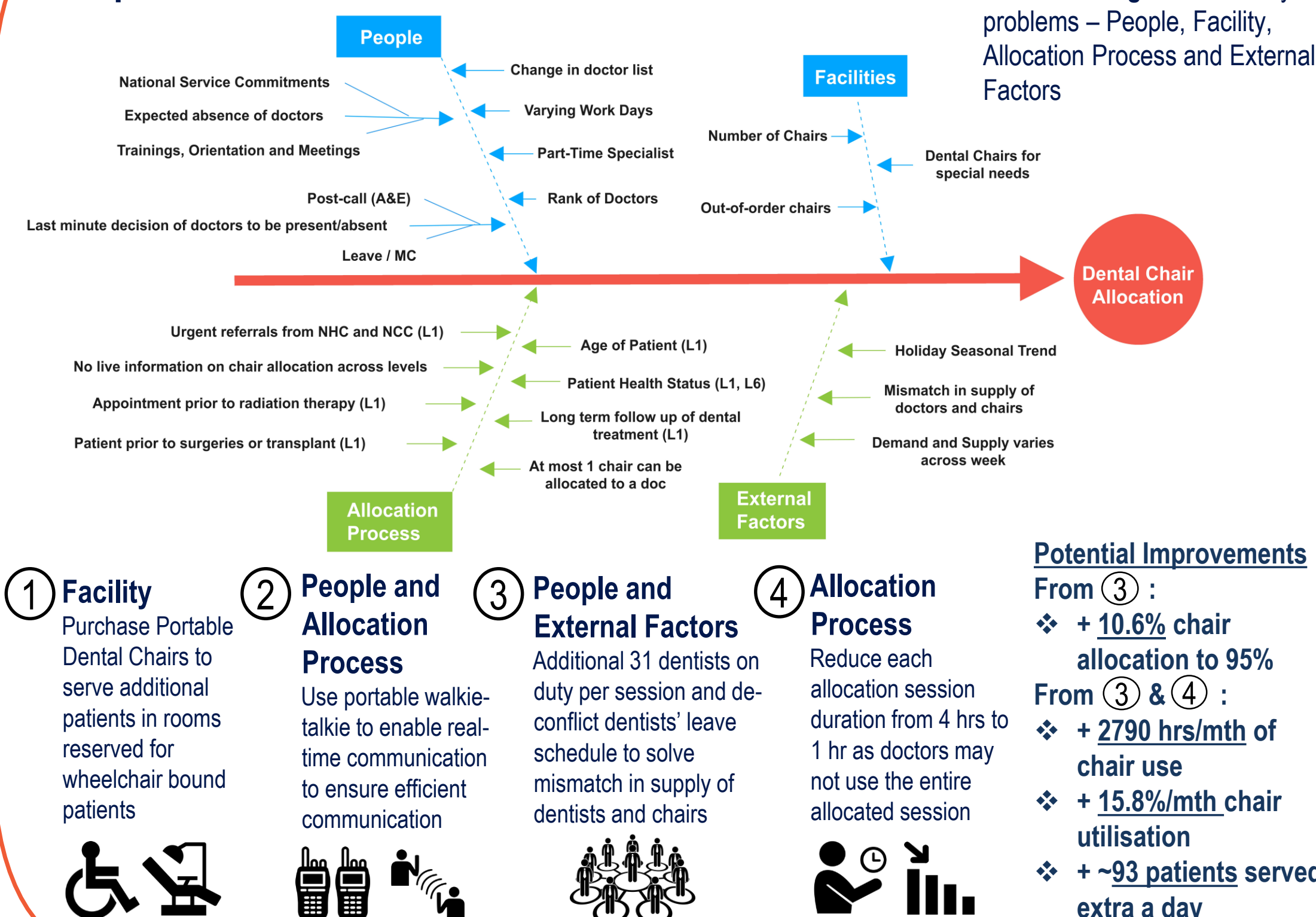
\* Data presented on this poster are fabricated for demonstration purpose only



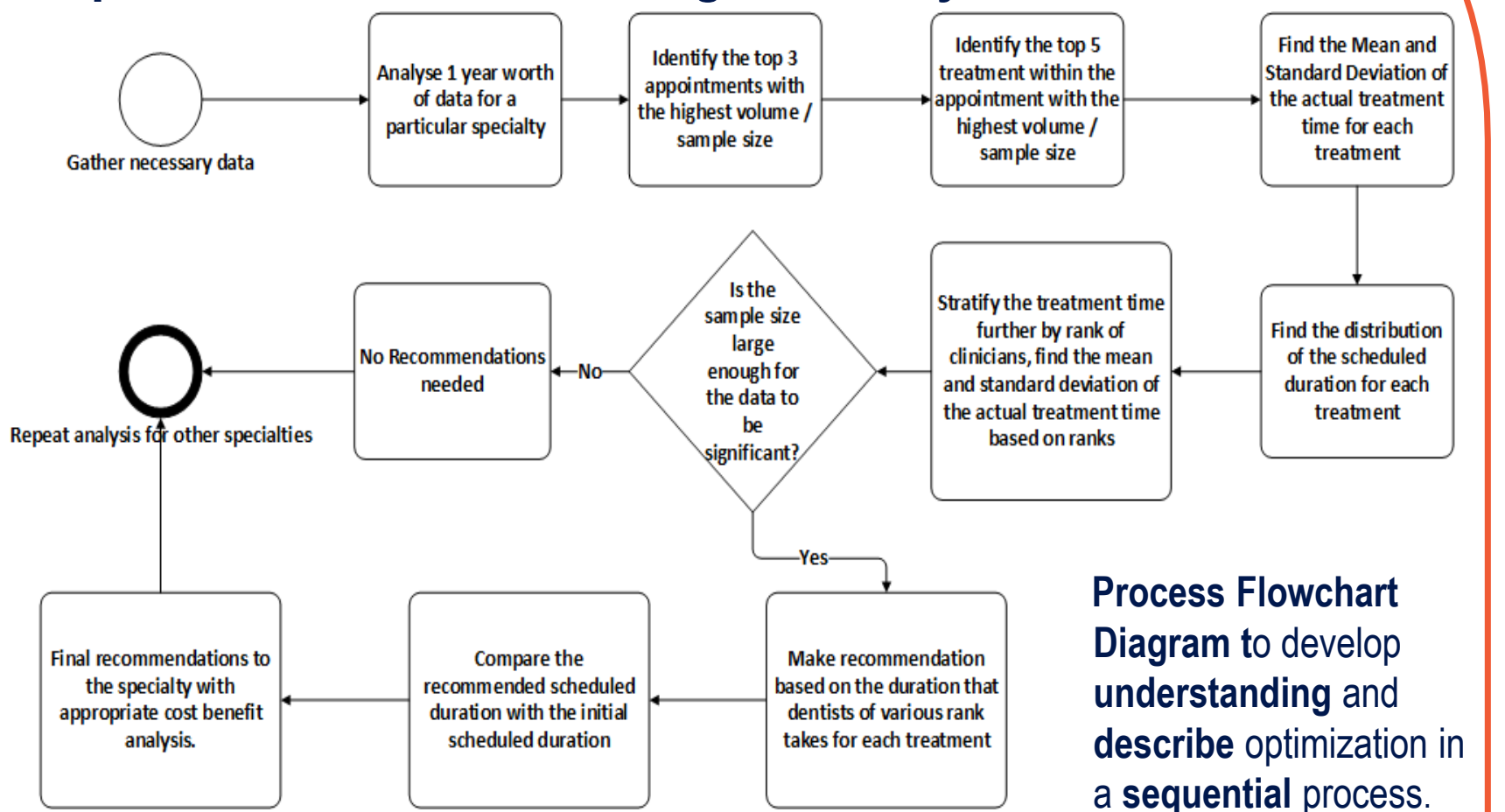
Monthly performance reports disseminated to Sr. Mgmt. & HODs Provide accurate contextual and knowledge-driven data for informed decision making

## Technical Implementation - Optimisation

### Improvements to Dental Chair Allocation



### Improvements to Scheduling Accuracy



**Key Findings:** Scheduled treatment duration was optimised and recommendations for various treatment duration was made for all 9 departments in the dental centre

**Potential Improvements**

- + 55.5 hrs/mth of chair use
- + 0.31%/mth chair utilisation
- + ~2 patients served extra a day

**Limitations:** Analysis assumes dental treatment to be done is known at the point of scheduling appointments.

By applying methodologies to real world systems and issues, we successfully provided the visibility and enhanced use of dental chairs. With continuous monitoring and improvements by NDCS in the future, this initiative can ultimately contribute to a reduction of inefficient use of healthcare resources for the benefit of the community.